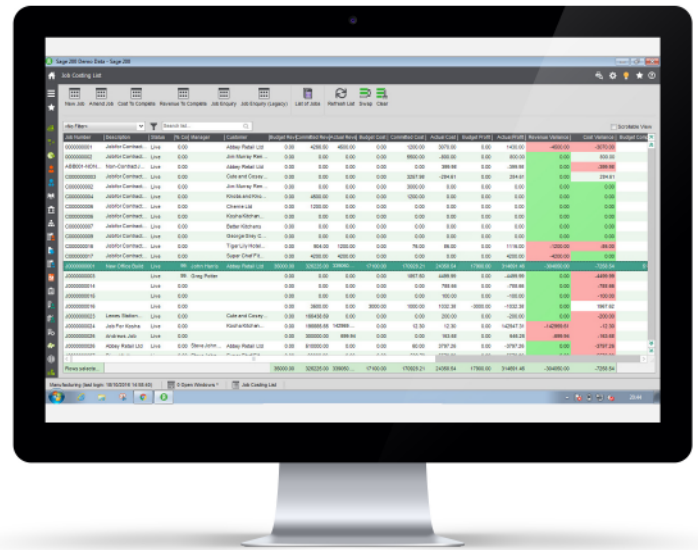




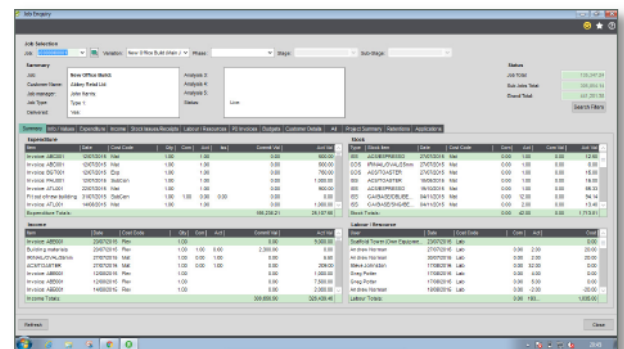
# Job Costing

Sicon Job costing is designed specifically for Sage 200, integrating with Purchase ledger, SOP, POP, Stock, Time Recording and Works Order Processing. It provides solutions for clients in manufacturing, construction, software development and all types of contract management.

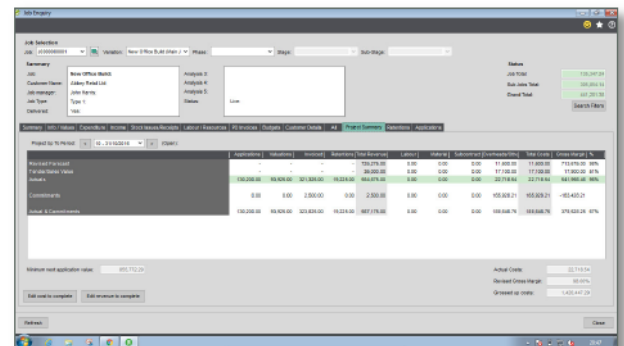
- Create Jobs manually, or automate from Sales Order Processing.
- Enter Purchase invoices and link to one or more jobs.
- SOP and POP lines can be linked to jobs and shown as commitments.
- Stock can be linked to jobs via Stock Control, Internal Issues and Returns. Allocated stock is shown as committed stock usage.
- Complex job structures can be created with linked works orders allowing allocation of stock to jobs and assisting the material planning process.
- Labour is recorded directly into job costing but can be planned on the built in scheduler to create committed labour.
- Detailed WIP reporting included with standard Sage 200 reports.
- 100% reconciliation between nominal ledger transactions and jobs.
- Job enquiry and management screen provide a simple view of jobs, showing all costs, revenues and budgets with drill down to detail and history.
- Instantly identify outstanding sales and purchases as commitments.
- Jobs are quick and simple to setup, just one click will create a job.
- Most data input is carried out in the normal Sage modules removing duplication.
- Budget by cost heading and optionally by period and cost heading.
- Custom job management tabs and fields with linked workspaces available.
- Drill down to sales orders, purchase orders, purchase invoices, stock transactions (works orders when purchased) and any related documents.
- Create phase, stages and sub stages within jobs.



Desktop List View



Job Costing Summary Screen



Job Summary and Cost to Complete