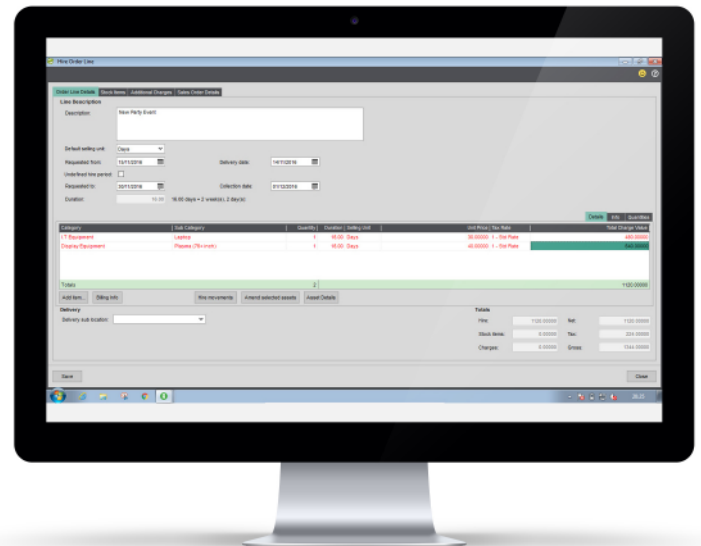




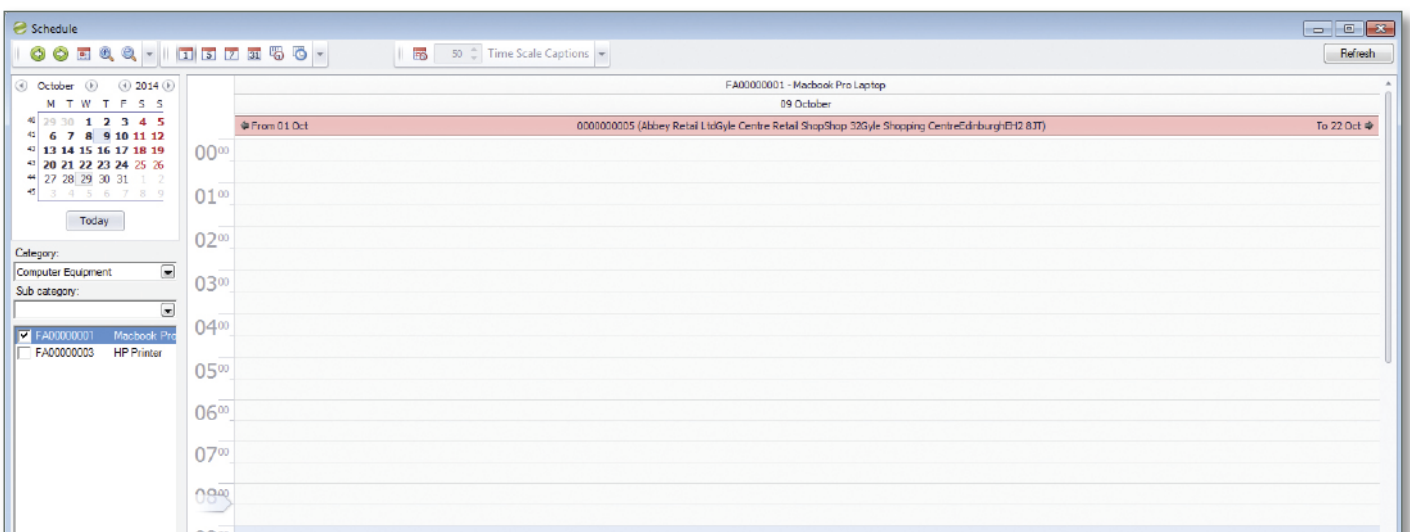
Hire Manager

The Sicon Hire Manager is designed specifically as an additional module for Sage 200. Fully integrated with the Sicon Fixed Assets (included with hire manager), Sage 200 Stock and Order Processing modules. Designed to manage the requirements of hire organisation's needing to create hire documentation, schedule people and equipment, control pricing and generate one off or periodic invoices for the items on hire.

- Installed and maintained within Sage 200.
- Runs with all Sage 200 Companies at no extra cost.
- Available for all Sage 200 users based on permissions at no extra cost.
- Flag specific Sicon Fixed Assets to be made available for hire.
- Stock items can be transferred to Fixed Asset and made available for Hire.
- Flag assets with calibration or service dates. They will become unavailable if they expire.
- Force items to be inspected upon return before being available for hire again.
- Back to Back hire: Hire in equipment and e-hire out.
- Simple scheduling and diary view of assets.
- Maintains an on-hire diary view for every hire asset.
- Identify conflicts and issues with items being extended or returned late.
- Graphical user interface shows multiple assets availability in a single view.
- Schedule by Asset category when hiring multiple items.



Hire Order Entry Screen



Hire Diary Scheduler