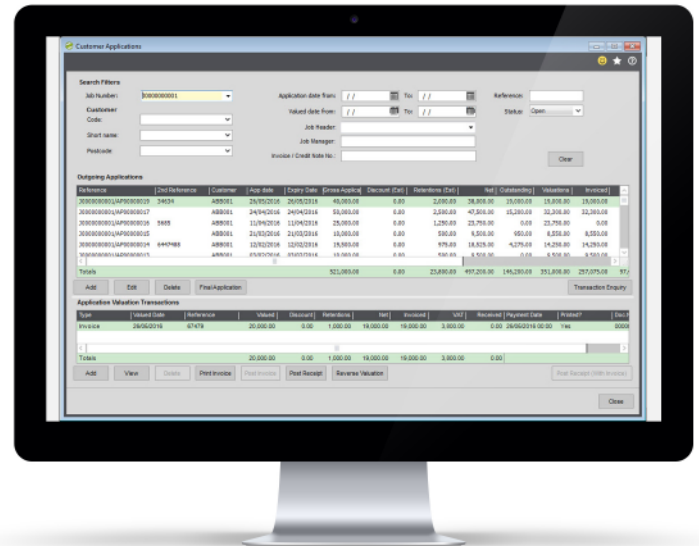




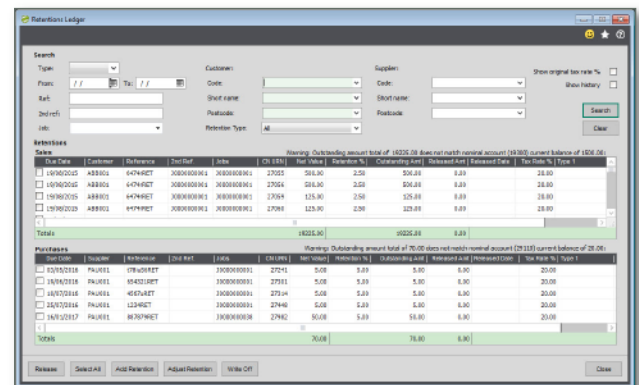
Construction Manager and CIS

Sicon Construction Manager is a set of add-on modules for Sage 200, based around the well-established Sicon Job Costing module to capture costs from purchase orders, purchase invoices, stock issues, cash transactions and labour to create reliable and accurate costings linked directly to transactions processed within Sage 200. Handling CIS, CITB, Applications, Retentions and Valuations and Payments.

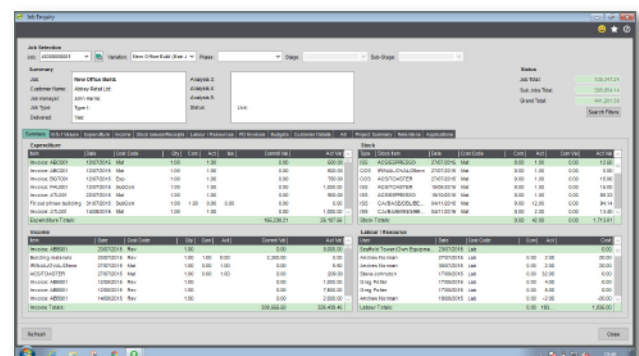
- Installed and maintained within Sage 200.
- Available to all Sage 200 companies and users, with permissions, at no additional cost.
- Sub-Contractors are setup within the Sage 200 purchase ledger with relevant CIS, CITB and retention details.
- Sicon Job Costing captures costs and revenues for each job, phase, stage and sub stage.
- Record stock issues, purchase orders, purchase invoices, labour, cash book and nominal costs against each job.
- Customer applications are processed within a dedicated applications module. Agreed valuations are recorded against each application and relevant invoices generated with detailed cumulative summary data.
- The Retentions ledger stores all supplier and customer retentions with release dates and options.
- Print customer applications and manage cumulative valuations and invoice processing.
- Supplier Applications are logged, valued and cumulative figures updated with options to generate Self-bill invoices or to reconcile to invoices received from the supplier.
- Detailed aged application and retention reports are included within the construction module.
- CIS is calculated on paid or allocated invoices based on nominal coding or subcontractor percentage deductions.
- Print subcontractor payment statements from Sage 200 before submission of CIS.
- HMRC Approved online submissions of CIS and subcontractor verifications.
- Job Period Enquiry enables period by period accounting and accrual adjustments.



Customer Applications Ledger



Retentions Ledger



Job Costing Enquiry