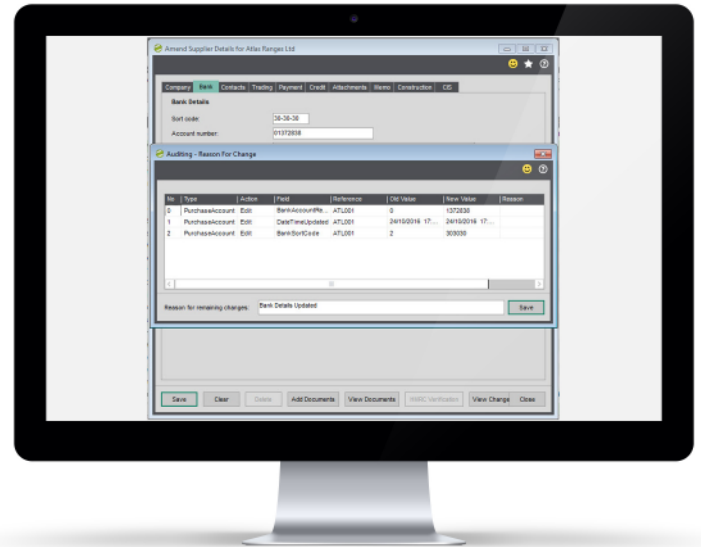




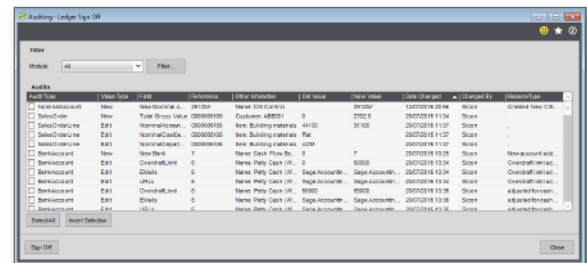
Audit Log

This is a fully integrated module written specifically for Sage 200. Designed to track field level changes to core financial modules, sales and purchase order processing modules, stock and price book. Options for 'Silent' change logging or user prompted reasons for change which are configurable per Sage module.

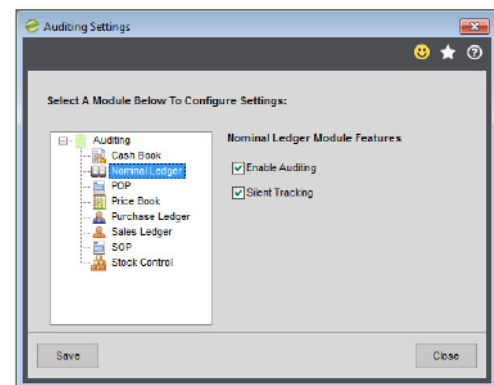
- Installed and maintained within Sage 200.
- Runs with all Sage 200 Companies at no extra cost.
- Available for all Sage 200 users based on permissions at no extra cost.
- Seamlessly integrated in to the Sage 200 screens and processes.
- Track changes made to core module data including purchase ledger bank details.
- Choose which Sage 200 modules you need to record changes in.
- Record changes in silent logging mode or select to force a reason and description for the change.
- A sign-off process provides a full list of every change made.
- Users can be restricted from signing off their own changes.
- Sage 200 based reports available to review all historical changes made in each module.
- Sage 200 modules included in the audit log:
 - Nominal Ledger
 - Sales Ledger
 - Purchase Ledger
 - Cash Book
 - Stock Control
 - Sales Order Processing
 - Purchase Order Processing
 - Price Book



Forced To Enter Change Details After Amending Purchase Ledger Bank Details.



Audit Log Sign Off Screen Showing Changes Made By Users



Options To Enable Auditing In Each Sage 200 Module